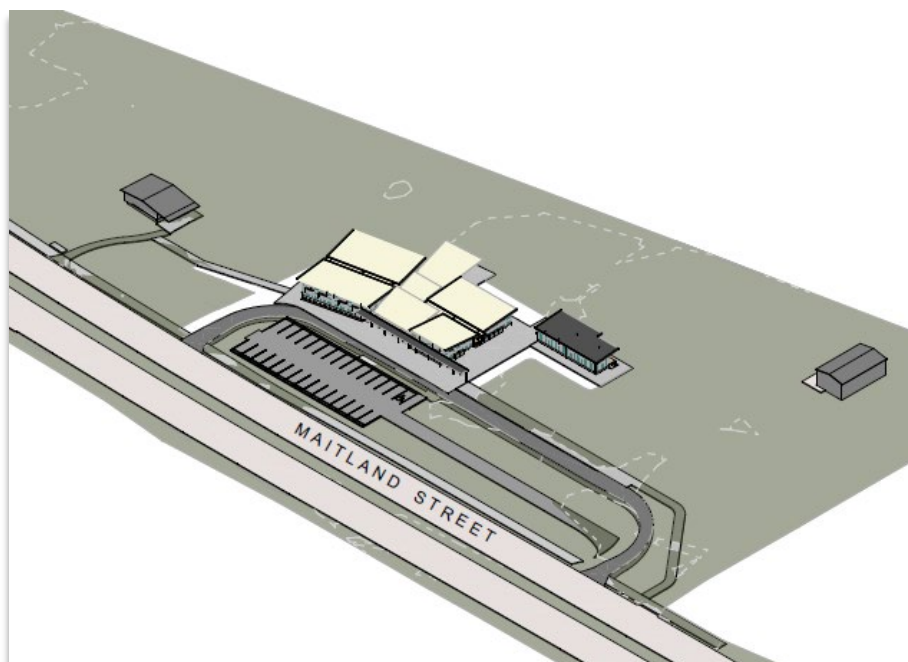


# MAITLAND STREET SCHOOL

COMMUNITY UPDATE #8 – DECEMBER 2025  
PACIFIC BROOK CHRISTIAN SCHOOL



*Figure: 3D Perspective of Stage 1 Development (Source: NBR Architecture)*

---

## Project Update – Construction Works Commenced

As we approach the Christmas season, it is a pleasure to provide this final update for 2025 and share the encouraging progress underway at our new school site at 72-74 Maitland Street, Muswellbrook.

Early works have now commenced, with controlled tree removal, clearing, and site preparation activities now having been completed. These works are the first tangible signs of the vision God has placed before our school community.

## Builder Appointment

A preferred builder has now been identified following a thorough evaluation and procurement process. We are progressing final contract negotiations and anticipate formal appointment shortly. Once appointed, the builder will undertake design finalisation before commencing full construction works planned for early in the new year.

## WHAT'S IN THIS UPDATE #8

*Works have commenced at 72-74 Maitland Street, with tree removal and site preparations completed.*

*This progress marks the beginning of the construction phase, as we finalise contract negotiations with our builder in readiness for major works planned for early in the new year.*

*We continue to operate from our 30 Sowerby Street campus under an extended approval.*

*Thank you for your continued support and your prayers. We wish you and your families a safe, joyful, and Christ-filled Christmas.*

*More updates to come in 2026...*

*Merry Christmas!*

## Construction Timeline

Major works are programmed to begin in the early months of 2026. These include demolition of the existing building structures, earthworks, service installation, and the staged delivery of new buildings that will form our School.

We will issue our next update early next year, when we intend to outline the detailed construction timeline and next steps.

## 30 Sowerby Street

We remain grateful for the continued use of Sowerby Street, made possible through the generosity of the Presbyterian Property Trust. This support continues to sustain our mission as we transition towards the new Maitland Street site.

## A Christmas Message to Our Community

As we celebrate the birth of our Saviour, Jesus Christ, we are reminded that God's faithfulness guides every step of this journey. This season invites us to pause, give thanks, and acknowledge His provision and grace in all things.

The progress made this year has been a testament to God's favour and the steady encouragement of our families, staff, neighbours, and wider community. We prayerfully look forward to the year ahead, confident that the work now begun on site will flourish under His guidance.

### Isaiah 9:6 (NIV)

*"For to us a child is born, to us a son is given, and the government will be on his shoulders. And he will be called Wonderful Counsellor, Mighty God, Everlasting Father, Prince of Peace."*